

# National School Chaplaincy

## Snapshot

### Quick Facts



**1,721**  
chaplains



**2,455**  
schools

working on average  
3 days a week

#### Gender

**28%**  
Male

**72%**  
Female



#### Age

Gen Z **8%**

Gen Y **27%**

Gen X **40%**

Baby Boomer **25%**

Builder **0.1%**

#### Qualifications

Master **7%**

Graduate Diploma **11%**

Graduate Certificate **2%**

Bachelor **24%**

Advanced Diploma **5%**

Diploma **25%**

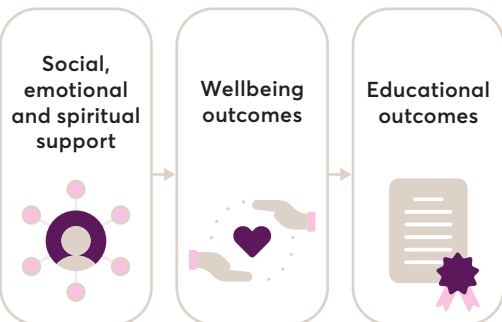
Certificate **22%**

**74%**

Three in four (74%) chaplains exceed the minimum qualification level of Cert. IV across Youth Work, Social Work, Psychology, Counselling, Education, Ministry/Theology and other disciplines.

### What Chaplains Do

School chaplains promote social, emotional and spiritual wellbeing through role modelling, mentoring, pastoral care, structured activities and programs.



### A Caring Presence

Chaplains provide a caring environment for students, staff and parents/carers through taking the time to listen.



Every week chaplains nationally have 30,805 informal conversations with students.



Every week chaplains have 22,443 informal conversations with parents/carers and school staff.

### Pastoral Conversations



Chaplains have 15,724 formal pastoral conversations with students per week\*.

### Student support snapshot:

#### Top 5 pastoral issues:

(Based on number of pastoral conversations per week)



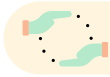
**Friendships/  
Peer issues** **15%**



**Mental health -  
anxiety, depression** **15%**



**Bullying/Harassment** **10%**



**Educational support-  
School behaviour** **9%**



**Family - Breakdown/  
Parental separation** **9%**

#### Formal pastoral conversations with particular student groups per week:

**Indigenous** **11%**

**Disability/Special needs** **9%**

**In-Care/Guardianship of  
Department of Child Safety** **8%**

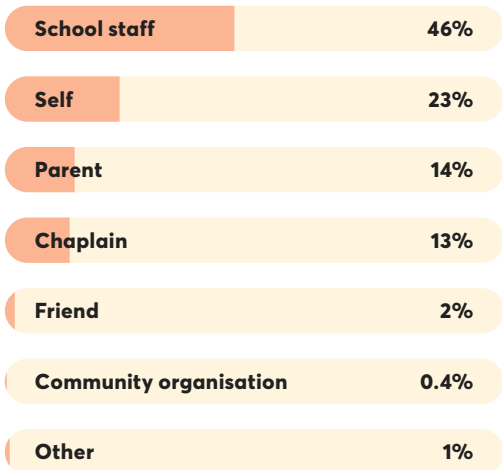
**CALD (Culturally And  
Linguistically Diverse)/Migrant** **5%**

**LGBTQI+** **4%**

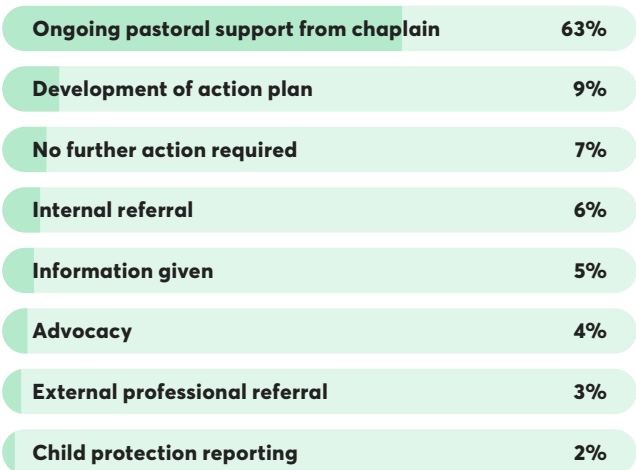
**Parent in Prison** **4%**

9,060 meetings each week with school-based support professionals including guidance officers, counsellors, special needs coordinators and many others.

### Source of referral:



### Outcomes:



### Bullying



Chaplains have 1,948 conversations in relation to bullying per week.



**83%**  
Face-to-face bullying



**17%**  
Cyber bullying

**2,902** students participated in **71** anti-bullying specific programs on average per school term.



### As an average, since the beginning of COVID-19:



One in six pastoral conversations with students (17%) have been related to COVID-19.



One in ten pastoral conversations with students (9%) have been online or over the phone.

### Programs and Activities

Each term chaplains run **7,025** programs supporting **313,109** students.

#### Program breakdown (per term):

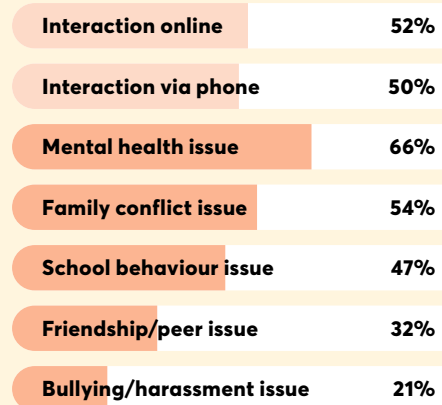
Participants Programs



### Chaplains have undertaken activities outside of their normal duties as a result of COVID-19



### During COVID-19, the following percentages of chaplains noted significantly/somewhat more:



#### Background information:

The National School Chaplaincy Association (NSCA) is a network of Christian Chaplaincy organisations in Australia. It is represented by Korus Connect (Vic), Generate Ministries (NSW), Schools Ministry Group (SA), YouthCARE (WA) and Scripture Union (ACT, Qld, Tas, WA, NT, and Vic).

The 2021 National Chaplain Census took place during term 3, 2021 when 1,082 chaplains completed the survey. The data presented in this infographic has been extrapolated from the survey data to match the total number of chaplains (1,721) in Australia working for organisations that are part of the National Schools Chaplaincy Association (NSCA). Data labels in this infographic have been rounded and may, therefore, sum to 99% or 101%. Any calculations where two or more data points have been added are based on raw data (not the rounded data labels on the graph) which have then been rounded once combined.

Research and infographic by

**mccrindle**